

**Single Purchase Counterweight Fly System
Operated from stage right at deck level**
LINE SET CAPACITY: 590 kg 1,300 lbs

BATTEN (PIPE) LENGTH: 18.3 m 60 feet

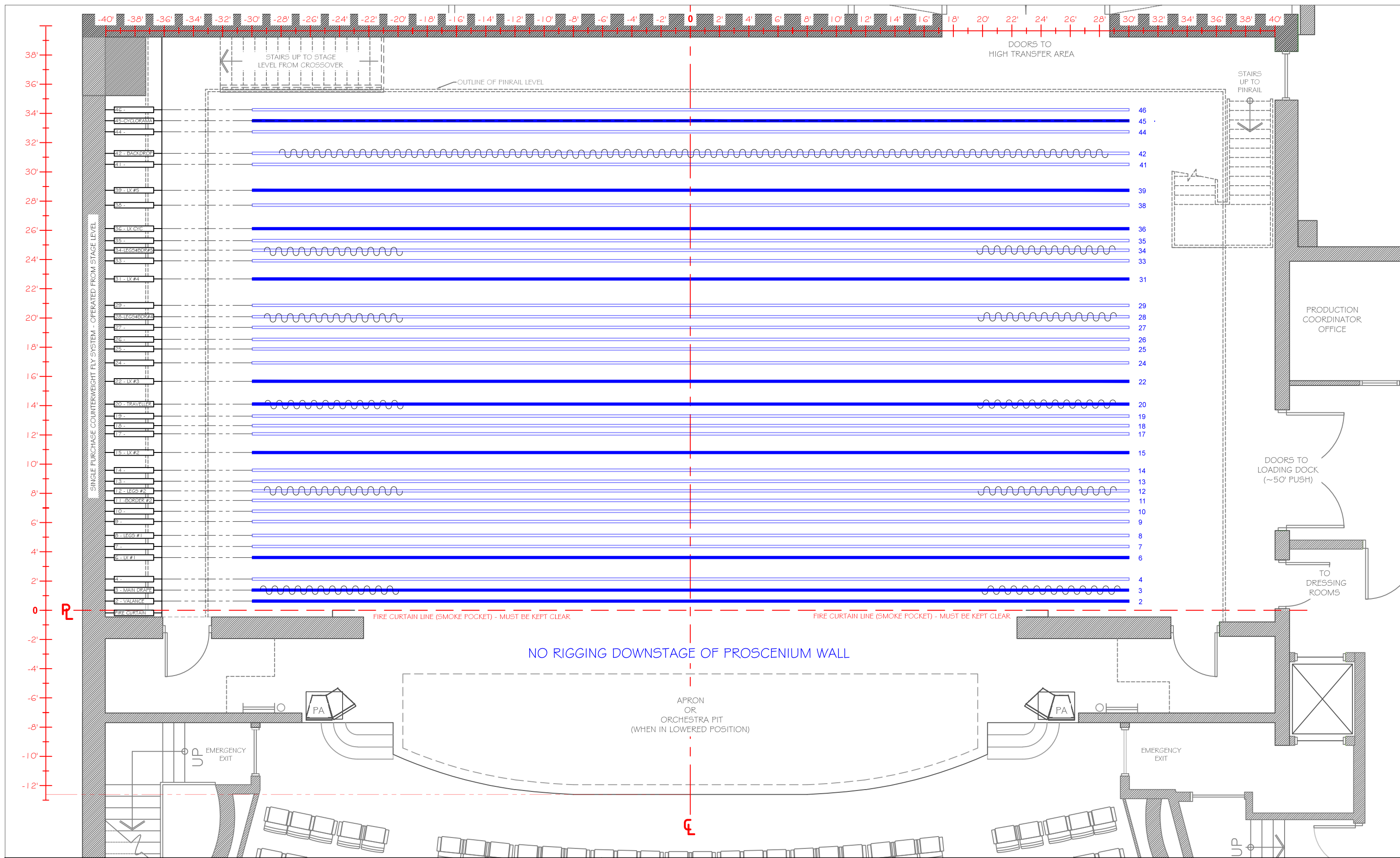
| LINE | DISTANCE From Setting Line (Upstage of Smoke Pocket) METERS | DISTANCE From Setting Line (Upstage of Smoke Pocket) IMPERIAL | HOUSE HANG | NOTES | HOUSE TRIM |
|------|--|--|---|-----------------------|---------------|
| 01* | - 0.08 | - 0' - 3" | Fire Curtain - travel must always be kept clear | Permanent | |
| 02* | 0.19 | 0'-7.5" | Valance (Bermuda Blue) | Permanent | 18'-9" |
| 03* | 0.42 | 1'-4.5" | Main Drape (Bermuda Blue) | Permanent | |
| 04 | 0.65 | 2'-1.5" | EMPTY | | |
| 06* | 1.10 | 3'-7.5" | 1 st Electrics (LX1) | 30 circuit raceway | 23'-5" |
| 07 | 1.33 | 4'-4.5" | EMPTY – LIMITED USE | Very close to LX1 | |
| 08 | 1.56 | 5'-1.5" | Black Legs 1 | 39' opening | |
| 09 | 1.85 | 6'-1" | EMPTY | | |
| 10 | 2.07 | 6'-9.5" | EMPTY | | |
| 11 | 2.29 | 7'-6" | Black Border 2 | | 18'-9" |
| 12 | 2.49 | 8'-2" | Black Legs 2 | 39' opening | |
| 13 | 2.69 | 8'-10" | EMPTY | | |
| 14 | 2.92 | 9'-7" | EMPTY | | |
| 15* | 3.29 | 10'-9.5" | 2 nd Electrics (LX2) | 30 circuit raceway | 23'-0" |
| 17 | 3.68 | 12'-1" | EMPTY | | |
| 18 | 3.85 | 12'-7.5" | EMPTY | | |
| 19 | 4.05 | 13'-3.5" | EMPTY | | |
| 20* | 4.30 | 14'-1.5" | Black Traveller (Legs & Border 3) | As Legs = 39' Opening | 19'-6" |
| 22* | 4.78 | 15'-8" | 3 rd Electrics (LX3) | 20 circuit raceway | 23'-3" |
| 24 | 5.16 | 16'-11" | EMPTY | | |
| 25 | 5.45 | 17'-10.5" | EMPTY | | |
| 26 | 5.65 | 18'-6.5" | EMPTY | | |
| 27 | 5.90 | 19'-4.5" | EMPTY | | |
| 28 | 6.13 | 20'-1.5" | Legs & Border 4 | 39' opening | 18'-3" |
| 29 | 6.36 | 20'-10.5" | EMPTY | | |
| 31* | 6.91 | 22'-8" | 4 th Electrics (LX4) | 20 circuit raceway | 23'-4" |
| 33 | 7.29 | 23'-11" | EMPTY | | |
| 34 | 7.51 | 24'-7.5" | Legs & Border 5 | 39' opening | 18'-1" |
| 35 | 7.71 | 25'-3.5" | EMPTY | | |
| 36 | 7.96 | 26'-1.5" | Cyclorama Lighting | | |
| 38 | 8.45 | 27'-8.5" | EMPTY | | |
| 39* | 8.76 | 28'-9" | 5 th Electrics (LX5) | 20 circuit raceway | 23'-9" |
| 41 | 9.30 | 30'-6" | EMPTY | | |
| 42 | 9.53 | 31'-3" | Black Drop | | 21'-1" |
| 44 | 9.98 | 32'-9" | EMPTY | | |
| 45* | 10.21 | 33'-6" | Cyclorama (PVC) | | |
| 46 | 10.44 | 34'-3" | EMPTY | | |
| ---* | 10.74 | 35'-3" | Storage Pipe Only | | |

NOTES: All distances shows are from the setting line (Upstage side of the smoke pocket)

Any line set indicated with * have permanent use.

Legs and border pipes can be changed. Above lists the stock house positions.

If any masking is moved, it must be restored at the production's expense, back to stock configuration.



MAINSTAGE - FLY SYSTEM PIPE LOCATIONS

Shaded Pipes have permanent use - see line set schedule for details

DRAWN BY: ML
 DATE: JAN-2015
 SCALE: AS INDICATED

CENTREPOINTE THEATRES
 Ben Franklin Place - 101 Centrepointe Drive
 Ottawa, ON K2G 5K7 613-580-2703

